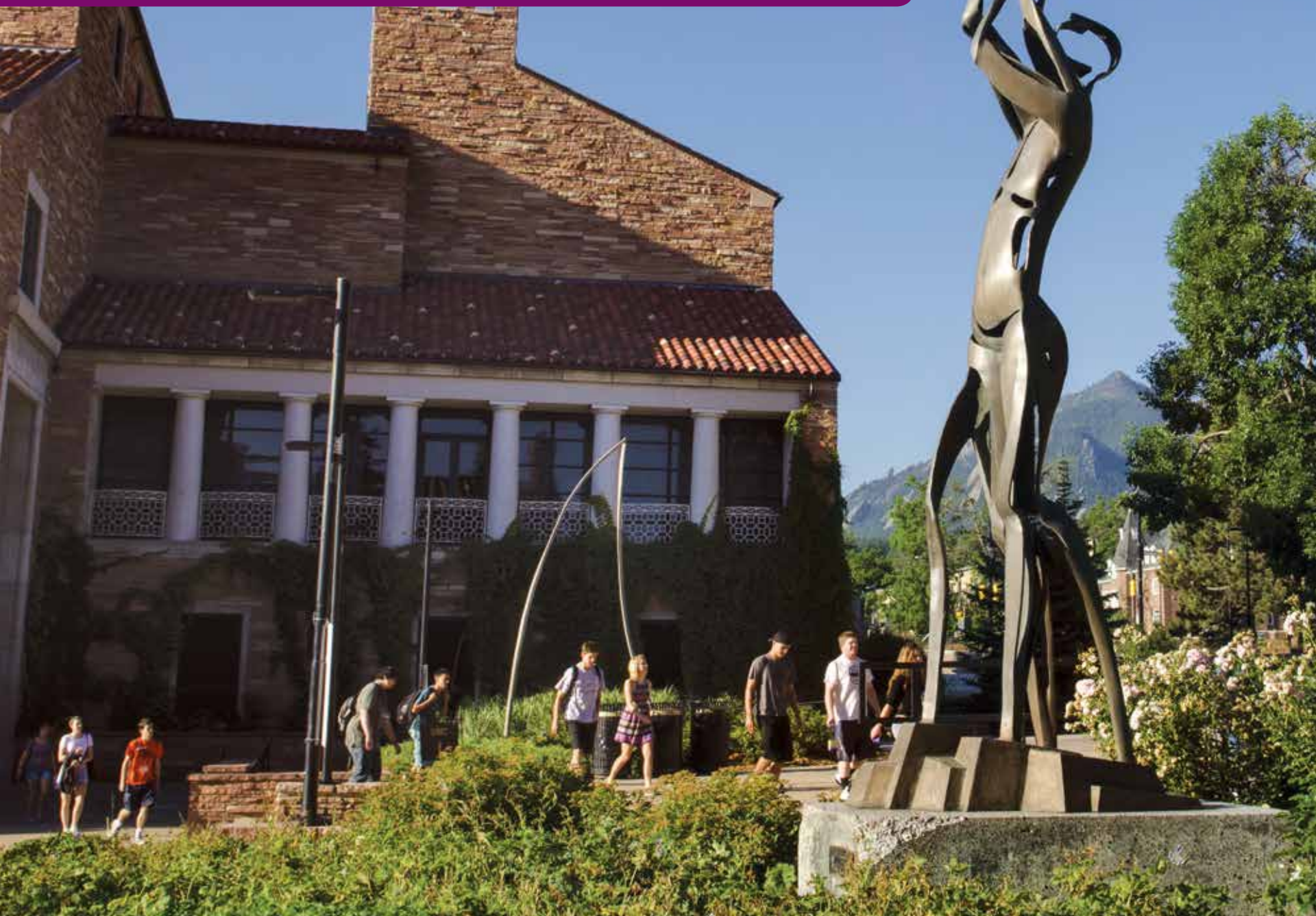


# CONTINUING EDUCATION



**Engage in Gender Studies.**  
Evening Credit — p. 2

**Bringing Words to Life.**  
Online Credit — p. 8

**See What CU-Boulder is Really Like.**  
High School Concurrent — p. 15

**Play Guitar. Earn Credit.**  
Applied Music — p. 16

**Explore more online:**  
Visit [ce.colorado.edu](http://ce.colorado.edu)

## SPRING '16

# LEARNING DOESN'T ALWAYS FOLLOW THE TRADITIONAL COLLEGE PATH

The Division of Continuing Education provides a variety of quality educational opportunities by extending the University of Colorado Boulder's resources in nontraditional ways.

Whether you need to complete a main campus prerequisite online or want to test the waters before returning to college, we provide unique learning options.

Our dedicated enrollment and advising staff is available to help you explore the possibilities and determine the best fit for you.

**Learning is a lifelong journey. Take your first step at [ce.colorado.edu](https://ce.colorado.edu).**



# CONTENTS

## Earn CU-Boulder Credit

---

- 2 Evening Credit
- 8 Online Credit
- 15 High School Concurrent
- 16 Applied Music
- 18 CU Complete
- 18 ACCESS
- 18 Individualized Instruction
- 20 Summer Session

## Ways to Advance Your Career

---

- 17 Speech Language and Hearing Sciences
- 19 Post-Baccalaureate Health Professions
- 29 Career Services

## Community Engagement

---

- 16 Youth Piano
- 21 CU on the Weekend
- 24 Science Discovery
- 26 Outreach and Engagement

## International Programs

---

- 18 Visiting International Student Program
- 22 International English Center

## Connect With Us

---

### 28 Enrollment and Student Resources

Learn more about the first steps toward taking advantage of the educational opportunities available through Continuing Education.

[ce.colorado.edu](http://ce.colorado.edu)

Course descriptions, registration, and tuition information is available online.



Printed on Forest Stewardship Council paper ensuring the highest standards of environmental and social responsibility. Share your catalog with friends, and recycle all appropriate materials. Thank you.

Women, Literature, and the Arts  
SHARON ADAMS

“When students realize what women and gender studies is about they become really

# ENGAGED

especially when they see how it effects not only people’s lives in general but also their own individual experience.”

“There is a lot of creativity involved in the discipline and it calls on us to think and learn at the same time. When students understand the meaning behind the material they are able to think more critically and gain awareness about their own bias.”

*See p. 6 for course details.*

## EARN CREDIT IN THE EVENING

**Make significant progress toward a degree or acquire career-advancing skills without putting the rest of your busy life on hold. Evening Credit allows you to start a degree, finish one, enhance your employability, experiment with returning to college, or supplement your current on-campus course load. It all depends on you.**

### Enrollment and Eligibility

We want to help you be successful at the University of Colorado and meet your academic goals. Requirements for admission vary by your status (freshman, transfer, second-degree student), so set up an academic advising appointment at [ce.colorado.edu/advising](http://ce.colorado.edu/advising) before you enroll in classes.

Enroll through [MyCUInfo.colorado.edu](http://MyCUInfo.colorado.edu), by mail, fax, or in person at the Division of Continuing Education, 1505 University Avenue, 8 am-5 pm Monday through Friday.

### New Students

- A high school diploma or GED is required for enrollment.

- Students under age 22 should bring copies of high school transcripts, any college transcripts, and SAT or ACT scores to advising appointments.
- If you are considering applying to CU-Boulder as a degree student in the future, meet with a Continuing Education academic advisor to learn about your academic options.

### Current CU-Boulder Students

- Enroll through [MyCUInfo.colorado.edu](http://MyCUInfo.colorado.edu)
- Evening credits are just like those awarded on main campus. Grades count toward your GPA. And your transcript doesn’t distinguish between evening and daytime courses.

- Individuals with University of Colorado service indicators (registration stops and financial holds) may not enroll.

For more information about admission procedures and registration status, call Continuing Education at 303-492-5148.

### Adding and/or Dropping Courses

A variety of courses are offered through Evening Credit each semester. See the list of courses by start date on pages 4-7 or search for courses by visiting [ce.colorado.edu](http://ce.colorado.edu).

Once registered, you may choose to withdraw from a course. If you fail to officially withdraw, you may receive a grade of F for that course and be liable for any tuition and fees. If you don’t regularly attend your course you may be administratively dropped. Check with your instructor or contact Continuing Education for additional information.

Learn more about deadlines for enrolling and dropping courses on p. 4.

## EVENING CREDIT



### Final Exams and Grades

Final exams are held the last day of the class. Final grades will be available on **MyCUInfo.colorado.edu** approximately two weeks after a class ends. To obtain an official transcript, visit the registrar's office website at **www.colorado.edu/registrar**.

### Residency

Tuition is determined by your residency. If you have lived in Colorado for the past 12 months, you may qualify for in-state tuition rates. To learn more or provide documentation of residency, contact our classification coordinator at 303-492-5148.

### Tuition

Tuition for Evening Credit is assessed in addition to any tuition paid on campus (resident or nonresident). However, Continuing Education will charge the in-state tuition rate for Evening Credit when a nonresident degree student pays full out-of-state tuition through the Boulder campus and then also enrolls in additional Evening Credit courses.

### In-state tuition

\$300 per credit hour.

### Out-of-state tuition

Up to three credits: \$1,172 per credit hour.  
Four or more credits: \$16,173

A full tuition schedule is available at **ce.colorado.edu/resources**.


### Student Fees

Some courses require special equipment or materials, necessitating an additional course fee.

Evening Credit students can choose to pay main campus student fees for use of the Recreation Center, Wardenburg Student Health Center, an RTD bus pass, etc. Visit **ce.colorado.edu/resources** for information.

### Faculty and Staff Discounts

University of Colorado faculty and staff on at least a half-time, permanent appointment and retired faculty and staff may enroll in classes at a 50% tuition discount. Please provide proof of status when you enroll.



**Get Connected**

Learn more about Evening Credit at **ce.colorado.edu/evening-credit**

## COURSES BY START DATE

Course No.–Hours	Sec.	Class No.	Times	Course Title	Core	In-state Tuition
------------------	------	-----------	-------	--------------	------	------------------

### FULL SESSION

Monday, Wednesday, and Friday courses begin January 11 and end May 4, 2015

FNCE 2820-3	302E	36216	1-1:50 p.m.	Introduction to Personal Financial Planning	none	\$900
FNCE 2820-3	301E	36215	12-12:50 p.m.	Introduction to Personal Financial Planning	none	\$900

Tuesday and Thursday courses begin January 12 and end Thursday, May 5

ARTS 1010-3	300E	36191	5-8 p.m.	Introduction to Studio Art	none	\$1,125
-------------	------	-------	----------	----------------------------	------	---------

## IMPORTANT DATES FOR EVENING CREDIT COURSES

Spring 2016

	Full Session (14 weeks)	10-Week Session (10 Weeks)	Session 1 (7 Weeks)	Session 2 (7 Weeks)
Registration Begins	November 2	November 2	November 2	November 2
Course Begins	January 19	February 1	January 19	March 7
11:59 pm deadline to enroll online using MyCUInfo (5 pm deadline in person) or add your name to a wait list	January 26	February 8	January 21	March 9
Deadline to petition for in-state tuition classification.	January 29	February 11	January 22	March 11
11:59 pm deadline using MyCUInfo (5 pm in person) to request pass/fail or to drop with a 100% refund*	February 2	February 15	January 26	March 14
Tuition Due	February 5	February 5	February 5	February 5
11:59 pm deadline to withdraw using MyCUInfo (5 pm in person or via email to ceregistration@colorado.edu) with a 60% refund**	February 16	February 22	February 2	March 28
11:59 pm deadline to withdraw using MyCUInfo (5 pm in person or via email to ceregistration@colorado.edu) with a 40% refund**	March 1	February 29	February 9	April 4
11:59 pm deadline to withdraw using MyCUInfo (5 pm in person or via email to ceregistration@colorado.edu) without instructor's signature. No tuition adjustment.***	April 4	March 18	February 15	April 15
Final Exams. Course Ends	April 28	April 14	March 3	April 28

\*Withdrawals from classes after this date will appear as a W on your academic record.

\*\*Students who withdraw may be eligible for a tuition adjustment depending on their residency status, when they drop, and the number of credits in which they are enrolled.

\*\*\*Instructor's signature and petition documenting extenuation circumstances required after this date to withdraw from classes. Petition forms available at Continuing Education.

### Other Important Dates:

January 1: New Year's Day, CU Closed

January 18: Martin Luther King Jr. Day, CU Closed

January 22: Deadline to apply for the Nontraditional Student Scholarship

March 21-24: Spring Break

March 25: Spring Break, CU Closed

## EVENING CREDIT

Course No.–Hours	Sec.	Class No.	Times	Course Title	Core	In-state Tuition
------------------	------	-----------	-------	--------------	------	------------------

### Monday courses begin January 25 and end April 25

BCOR 2300-3	300E	36176	5:30-7:30 p.m.	Adding Value with Management	Business Core	\$900
CLAS 1051-3	300E	36197	6-8 p.m.	The World of the Ancient Greeks	historical context	\$900
ECON 2010-4	300E	36207	6-9 p.m.	Principles of Microeconomics	contemporary societies	\$1,200
HIST 1015-3	300E	36222	6-8 p.m.	History of the United States to 1865	United States context	\$900
MUEL 1832-3	300E	36237	6-8 p.m.	Appreciation of Music	literature and the arts	\$935
PHIL 1000-3	300E	36243	6-8 p.m.	Introduction to Philosophy	ideals and values	\$900
PSYC 2012-3	300E	36275	6-8 p.m.	Biological Psychology 1	natural science	\$900
PSYC 3456-3	300E	36284	6-8 p.m.	Psychology of Personality	none	\$900
THTR 3011-3	300E	36308	6-9 p.m.	Development of the American Musical Theatre	literature and the arts	\$945
WRTG 3020-3	300E	36311	6-7:30 p.m.	Topics in Writing	written communication	\$910

### Monday and Wednesday courses begin January 20 and end April 27

ARTS 1212-3	300E	36226	4-6:20 p.m.	Painting for Non-Majors	none	\$1,125
SPAN 1010-5	300E	36302	5:30-7:30 p.m.	Beginning Spanish 1	foreign language	\$1,520
SPAN 1020-5	300E	36303	6-8 p.m.	Beginning Spanish 2	foreign language	\$1,520
SPAN 1150-5	300E	36304	5:30-8:00 p.m.	Intensive First Year Spanish	foreign language	\$1,520

### Tuesday courses begin January 19 and end April 26

ANTH 2020-3	300E	36171	6-8 p.m.	Introduction to Physical Anthropology 2	natural science	\$900
ANTH 4420-3	300E	36173	6-8 p.m.	Archaeology of Ancient Egypt	none	\$900
CESR 4821-3	300E	36177	5:30-8:30 p.m.	Values and the Power of the Consumer	none	\$900
ECON 2020-4	300E	36209	6-9 p.m.	Principles of Macroeconomics	contemporary societies	\$1,200
ENGL 3060-3	300E	36211	6-8 p.m.	Modern and Contemporary Literature for Nonmajors	literature and the arts	\$900
HIST 1025-3	300E	36223	6-9 p.m.	History of the United States since 1865	United States context	\$900
MATH 2510-3	300E	36236	6-8:30 p.m.	Introduction to Statistics	none	\$900
MUEL 2852-3	300E	36242	6-9 p.m.	Music of the Rock Era	literature and the arts	\$935
PSCI 3301-3	300E	36268	6-9 p.m.	Gender, Sexuality and U.S. Law	human diversity	\$900
SOCY 2031-3	300E	36299	6:30-8:30 p.m.	Social Problems	ideals and values	\$900
SPAN 2110-3	300E	36305	6-8 p.m.	Second-Year Spanish 1	foreign language	\$920
THTR 2059-3	300E	36306	6-9 p.m.	Open Topics in Theatre and Drama: Creative	none	\$900
WRTG 1150-3	301E	36310	6-8 p.m.	First-Year Writing and Rhetoric	written communication	\$925

### Tuesday and Thursday courses begin January 19 and end May 5

ARTS 1875-3	300E	36194	6-9 p.m.	Ceramics for Nonmajors	none	\$1,125
MATH 1300-5	300E	36235	6-8:30 p.m.	Calculus 1	quantitative reasoning and mathematical skills	\$1,500



### Start Earning Evening Credit

Course descriptions and more are available at [ce.colorado.edu/evening-credit](http://ce.colorado.edu/evening-credit)

**COURSES BY START DATE** (continued)

Course No.–Hours	Sec.	Class No.	Times	Course Title	Core	In-state Tuition
<b>Wednesday courses begin January 20 and end April 27</b>						
CLAS 1061-3	300E	36200	6-8 p.m.	The Rise and Fall of Ancient Rome	historical context	\$900
COMM 1300-3	300E	36203	5:30-8:30 p.m.	Public Speaking	none	\$915
EBIO 1210-3	300E	36205	6-8 p.m.	General Biology 1	natural science	\$900
EBIO 1220-3	300E	36206	6-9 p.m.	General Biology 2	natural science	\$900
GEOG 1982-3	300E	36219	6-9 p.m.	World Regional Geography	none	\$900
GEOG 3251-3	300E	36220	6-9 p.m.	Mountain Geography	none	\$900
MUEL 2772-3	300E	36240	6-8 p.m.	World Musics	human diversity	\$935
PHIL 1100-3	300E	36244	6-8 p.m.	Ethics	ideals and values	\$900
PSCI 1101-3	300E	36246	6-8 p.m.	American Politics	contemporary societies or US context	\$900
PSYC 1001-3	300E	36271	6:30-9:30 p.m.	General Psychology	none	\$900
SOCY 1001-3	300E	36289	6-8 p.m.	Introduction to Sociology	contemporary societies	\$900
WMST 2200-3	300E	36309	6-8 p.m.	Women, Literature, and the Arts	human diversity or literature & the arts	\$900
<b>Thursday courses begin Thursday, January 21 and end April 28</b>						
ANTH 3000-3	300E	36172	6-8 p.m.	Primate Behavior	natural science	\$900
BCOR 1015-3	300E	36175	5:30-8:30 p.m.	World of Business	Business Core	\$900
ENGL 3000-3	300E	36210	6-8 p.m.	Shakespeare for Nonmajors	literature and the arts	\$900
FILM 1002-3	300E	36212	6-8:30 p.m.	Film Analysis for Non-Majors	none	\$1,010
FILM 2003-3	300E	36213	6-9 p.m.	Landscape and Cinema	none	\$1,010
HIST 1012-3	300E	36221	6-9 p.m.	Empire, Revolution and Global War: European	historical context	\$900
MATH 1011-3	300E	36233	6-9 p.m.	College Algebra	quantitative reasoning and mathematical skills	\$900
MATH 1012-3	300E	36234	6-8 p.m.	Quantitative Reasoning and Mathematical Skills	quantitative reasoning and mathematical skills	\$900
MUEL 2752-3	300E	36238	6-8 p.m.	Music in American Culture	United States context	\$935
PHIL 1200-3	300E	36245	6-8 p.m.	Philosophy and Society	United States context or ideals and values	\$900
PSYC 2145-3	300E	36278	6-8 p.m.	Introductory Cognitive Psychology	none	\$900
SOCY 2061-3	300E	36300	6-8 p.m.	Introduction to Social Statistics	none	\$900

**Eunice Choi**

Ceramics for Non-Majors

**“Coming to this class calms down my mood and helps relieve the stress of my other classes. I don’t have to think about equations; I just sit down and do something I enjoy. I’ve never taken an art class before, so this is a good opportunity for me to try something new. I like that I can experiment with different styles and be creative.”**



## EVENING CREDIT

Course No.–Hours	Sec.	Class No.	Times	Course Title	Core	In-state Tuition
------------------	------	-----------	-------	--------------	------	------------------

### SESSION I

Tuesday and Thursday courses begin January 19 and end March 3

GEOG 1001-4	100E	36217	6-8 p.m.	Environmental Systems 1–Climate and Vegetation	natural science	\$1,200
-------------	------	-------	----------	--	-----------------	---------

### 10 WEEK

Monday courses begin February 1 and end Monday, April 11

COMM 3300-3	400E	36204	5:30-8:30 p.m.	Rhetorical Foundations of Communication	none	\$915
IPHY 2420-3	400E	36232	6-8 p.m.	Nutrition for Health and Performance	natural science	\$900
SOCY 3151-3	400E	36301	6-8 p.m.	Self in Modern Society	United States context or ideals and values	\$900

Tuesday courses begin February 2 and end Tuesday, April 12

ARTH 1300-3	400E	36174	6-8 p.m.	History of World Art 1	literature and the arts	\$975
WRGT 3020-3	400E	30312	6-7:30 p.m.	Topics in Writing	written communication	\$910

Wednesday courses begin February 3 and end Wednesday, April 13

CLAS 4130-3	400E	36201	6-9 p.m.	Greek and Roman Comedy	literature and the arts	\$900
PSCI 2223-3	400E	36266	6-8 p.m.	Introduction to International Relations	contemporary societies	\$900
RLST 2500-3	400E	36287	6-8 p.m.	Religions in the United States	United States context or ideals and values	\$900
SOCY 1016-3	400E	36290	6-8 p.m.	Sex, Gender, and Society 1	human diversity	\$900

Thursday courses begin February 4 and end Thursday, April 14

PSCI 3143-3	400E	36267	6-9 p.m.	Current Affairs in International Relations	contemporary societies	\$900
-------------	------	-------	----------	--	------------------------	-------

### SESSION II

Monday courses begin March 7 and end April 25

ANTH 1160-3	200E	36169	6-8:30 p.m.	The Ancient Egyptian Civilization	human diversity	\$900
-------------	------	-------	-------------	-----------------------------------	-----------------	-------

Tuesday and Thursday courses begin March 8 and end April 28

GEOG 1011-4	200E	36218	6-8 p.m.	Environmental Systems 2–Landscapes and Water	natural science	\$1,200
-------------	------	-------	----------	--	-----------------	---------



**Find Course Descriptions and More**  
[ce.colorado.edu/evening-credit](http://ce.colorado.edu/evening-credit)

Shakespeare for Non-Majors

RACHAEL DEAGMAN

“I focus on developing my students’  
close reading and

**ANALYTICAL**

thinking skills in online lectures and discussions.”

“Shakespeare’s plays were meant to be performed, so we need to think creatively about how the words on the page come to life on stage,” says Rachael. “The point of going to the theater is not just to be entertained, but also to learn how to watch and listen to others. Paying close attention to language is an important skill in every field. Through patient, careful reading practice we can resist fragmented forms of thought that are prevalent as a result of text messaging and social media.”

*See p. 10 for course details.*

### **THE FLEXIBILITY OF ONLINE WITH THE QUALITY OF CU**

Online Credit allows you to fit your education into your schedule with convenient coursework options. Term-based courses are offered on a semester calendar like in-person courses, but you choose when and where you learn. Self-paced courses offer a flexible start date throughout the year.

Online courses provide CU-Boulder rigor and rich interaction with diverse instructors and students. You can earn extra credit toward your degree, enhance and develop your job skills, prepare for a career change, or just satisfy your curiosity – all at your own convenience.

## ONLINE CREDIT



### Enrollment and Eligibility

Whether your goal is to earn extra credit toward your degree, enhance and develop your job skills, prepare for a career change, or just satisfy your curiosity, we want to help you succeed. That's why our academic advisors are available to help you by phone or in person before you enroll in classes. They can explain your requirements for admission depending upon your status (freshman, transfer, second-degree student). Make an appointment online by visiting [ce.colorado.edu/advising](https://ce.colorado.edu/advising).

Enroll through [MyCUInfo.colorado.edu](https://mycuinfo.colorado.edu), by mail, fax, or in person at the Division of Continuing Education, 1505 University Avenue, 8 am-5 pm Monday through Friday.

#### New Students

- A high school diploma or GED is required for enrollment.
- Students under age 22 should bring copies of high school transcripts, any college transcripts, and SAT or ACT scores to advising appointments.
- If you are considering applying to CU-Boulder as a degree student in the future, meet with a Continuing Education academic advisor to learn about your academic options.

#### Current CU-Boulder Students

- Enroll through [MyCUInfo.colorado.edu](https://mycuinfo.colorado.edu)
- Online credits are just like those awarded on main campus. Grades count toward your GPA. And your transcript doesn't distinguish between online and daytime courses.
- Individuals with University of Colorado service indicators (registration stops and financial holds) may not enroll.

For more information about admission procedures and registration status, call Continuing Education at 303-492-5148.

#### Course Information

Administered under the direction of the Online Credit Program, these University of Colorado credit classes are approved by the individual departments. For complete course descriptions, visit [ce.colorado.edu/online-credit](https://ce.colorado.edu/online-credit).

#### Term-based Courses

Term-based courses follow a fixed calendar so that all students will be on the same schedule and can regularly interact with each other online.

#### Self-paced Courses

Self-paced courses allow you up to 6 months to finish. Many of these courses involve online interaction among students and a broad range of web activities.

#### Tuition

Tuition for Online Credit is assessed in addition to any tuition paid on campus (resident or nonresident) by CU-Boulder degree students. However, Continuing Education charges a single rate for credits earned online, regardless of a student's in-state or out-of-state classification.

#### Online Credit tuition

\$377 per credit hour.

A full tuition schedule is available at [ce.colorado.edu/tuition](https://ce.colorado.edu/tuition).

#### Faculty and Staff Discounts

University of Colorado faculty and staff on at least a half-time appointment are eligible for a 20% discount on most courses with the exception of the Writing and Rhetoric courses.

## TERM-BASED ONLINE COURSES

These courses follow a semester calendar of assignments and examinations, but with the flexibility of a web based environment. Rich interaction between cohorts of students and instructors create dynamic learning opportunities.

### TERM-BASED COURSES BY START DATE

Course No.-Hours	Section	Class No.	Course Title	Core	Tuition
<b>Full Session – 14 Weeks: January 19 – April 29</b>					
ANTH 2010-3	581	36370	Introduction to Physical Anthropology 1	natural science	\$1131
ANTH 2020-3	581	36371	Introduction to Physical Anthropology 2	natural science	\$1131
ANTH 2200-3	581	36372	The Archaeology of Human History	historical context	\$1131
ANTH 3000-3	581	36373	Primate Behavior	natural science	\$1131
ARTS 1012-3	581	36374	Drawing for Non-Majors	none	\$1131
COMM 2400-3	581	36377	Discourse, Culture and Identities	human diversity	\$1131
COMM 2500-3	581	36378	Interpersonal Communication	none	\$1131
COMM 3310-3	581	36379	Principles and Practices of Argumentation	none	\$1131
COMM 3320-3	581	36380	Persuasion in Society	none	\$1131
COMM 3610-3	581	36381	Communication, Technology, and Society	none	\$1131
DNCE 1017-3	581	36382	Dance and Popular Culture	literature and the arts	\$1131
EBIO 1030-3	581	36384	Biology: A Human Approach 1	natural science	\$1131
EBIO 1040-3	581	36385	Biology: A Human Approach 2	natural science	\$1131
EBIO 1210-3	581	36394	General Biology 1	natural science	\$1131
EBIO 1220-3	581	36396	General Biology 2	natural science	\$1131
ENGL 3000-3	581	36402	Shakespeare for Non-Majors	literature and the arts	\$1131
ENGL 3060-3	581	36407	Modern and Contemporary Literature for Nonmajors	literature and the arts	\$1131

## IMPORTANT DATES FOR TERM-BASED ONLINE COURSES


### Spring 2016

	Full Session (14 weeks)	10-Week Session (10 Weeks)	Session 1 (7 weeks)	Session 2 (7 weeks)
Registration Begins	November 2	November 2	November 2	November 2
Courses Begin	January 19	February 1	January 19	March 7
11:59 pm deadline to enroll online using MyCUInfo (5 pm deadline in person) or add your name to a wait list	January 26	February 8	January 21	March 9
11:59 pm deadline using MyCUInfo (5 pm in person) to request pass/fail or to drop with a 100% refund*	February 2	February 15	January 26	March 14
Tuition Due	February 5	February 5	February 5	February 5
11:59 pm deadline to withdraw using MyCUInfo (5 pm in person or via email to ceregistration@colorado.edu) with a 60% refund	February 16	February 22	February 2	March 28
11:59 pm deadline to withdraw using MyCUInfo (5 pm in person or via email to ceregistration@colorado.edu) with a 40% refund	March 1	February 29	February 9	April 4
11:59 pm deadline to withdraw using MyCUInfo (5 pm in person or via email to ceregistration@colorado.edu) without instructor's signature. No tuition adjustment.	April 4	March 18	February 15	April 15
Course Ends	April 29	April 15	March 4	April 29

\* Withdrawals from classes after this date will appear as a W on your academic record.

## ONLINE CREDIT

Course No.--Hours	Section	Class No.	Course Title	Core	Tuition
ENGL 3060-3	582	36408	Modern and Contemporary Literature for Nonmajors	literature and the arts	\$1131
ENGL 3164-3	581	36411	History and Literature of Georgian Britain	historical context	\$1131
ENGL 3563-3	581	36414	Shakespeare	none	\$1131
ENGL 3677-3	581	37178	Jewish-American Literature	human diversity	\$1131
ENGL 4113-3	581	37179	History and Culture of Medieval England	historical context	\$1131
GEOG 1001-4	581	36427	Environmental Systems 1---Climate and Vegetation	natural science	\$1508
GEOG 1011-4	581	36430	Environmental Systems 2---Landscapes and Water	natural science	\$1508
GEOG 1972-3	581	36433	Environment-Society Geography	none	\$1131
GEOG 1982-3	581	36436	World Regional Geography	none	\$1131
GEOG 1992-3	581	36437	Human Geographies	none	\$1131
GEOG 3822-3	581	36439	Geography of China	human diversity	\$1131
GEOG 4501-3	581	36441	Water Resources and Water Management of Western United States	none	\$1131
GEOG 5501-3	581	36442	Water Resources and Water Management of Western United States	none	\$1440
GEOL 1010-3	581	36445	Introduction to Geology	natural science	\$1131
HIST 1011-3	581	36446	Greeks, Romans, Kings & Crusaders: European History to 1600	historical context	\$1131
HIST 1012-3	581	36448	Empire, Revolution and Global War: European History Since 1600	historical context	\$1131
HIST 1015-3	581	36449	History of the United States to 1865	United States context	\$1131
HIST 1025-3	581	36450	History of the United States since 1865	United States context	\$1131
HIST 1123-3	581	36452	Introduction to British History Since 1660	historical context	\$1131
IPHY 1950-3	581	36454	Introduction to Scientific Writing in Integrative Physiology	written communication	\$1131
IPHY 2420-3	581	36456	Nutrition for Health and Performance	natural science	\$1131
IPHY 2420-3	582	36457	Nutrition for Health and Performance	natural science	\$1131
JRNL 3651-3	581	36460	Journalism Law and Ethics	none	\$1131
MATH 1011-3	581	36389	College Algebra	quantitative reasoning and mathematical skills	\$1131
MATH 1012-3	581	36393	Quantitative Reasoning and Mathematical Skills	quantitative reasoning and mathematical skills	\$1131
MATH 1081-3	581	36395	Calculus for Social Science and Business	quantitative reasoning and mathematical skills	\$1131
MATH 1150-4	581	36398	Precalculus Mathematics	quantitative reasoning and mathematical skills	\$1508
MATH 2510-3	581	36406	Introduction to Statistics	none	\$1131
MUEL 2752-3	581	36409	Music in American Culture	United States context	\$1131
NRSC 4032-3	581	36428	Neurobiology of Learning and Memory	none	\$1131
NRSC 5032-3	581	36431	Neurobiology of Learning and Memory	none	\$1440
PHIL 1000-3	581	36434	Introduction to Philosophy	ideals and values	\$1131
PHIL 1100-3	581	36438	Ethics	ideals and values	\$1131
PHIL 1200-3	581	36440	Philosophy and Society	United States context or ideals and values	\$1131
PHIL 1400-3	581	36443	Philosophy and the Sciences	natural science	\$1131
PHIL 3140-3	581	36444	Environmental Ethics	ideals and values	\$1131
PHIL 3160-3	581	36447	Bioethics	ideals and values	\$1131
PSCI 1101-3	581	36451	The American Political System	contemporary societies or United States context	\$1131
PSCI 3143-3	581	36453	Current Affairs in International Relations	contemporary societies	\$1131
PSCI 3301-3	581	36455	Gender, Sexuality and U.S. Law	human diversity	\$1131
PSYC 2111-4	581	36458	Psychological Science I: Statistics	none	\$1508
PSYC 3303-3	581	36461	Abnormal Psychology	none	\$1131



**Start Earning Online Credit**

Course descriptions and more are available at [ce.colorado.edu/online-credit](http://ce.colorado.edu/online-credit)

**TERM-BASED COURSES BY START DATE** (continued)

Course No.–Hours	Section	Class No.	Course Title	Core	Tuition
PSYC 3511-3	581	36462	History of Psychology	none	\$1131
PSYC 4021-3	581	36464	Psychology and Neuroscience of Exercise	none	\$1131
PSYC 4541-3	581	36465	Special Topics in Psychology: Psychology of Sustainability	none	\$1131
SOCY 1001-3	581	36470	Introduction to Sociology	contemporary societies	\$1131
SOCY 1006-3	581	36472	The Social Construction of Sexuality	none	\$1131
SOCY 1016-3	581	36473	Sex, Gender, and Society 1	human diversity	\$1131
SOCY 2061-3	581	36474	Introduction to Social Statistics	none	\$1131
SOCY 2077-3	581	36475	Environment and Society	ideals and values	\$1131
SOCY 3151-3	581	36476	Self in Modern Society	United States context or ideals and values	\$1131
SOCY 4117-3	581	36477	Food and Society	none	\$1131
WRWG 3020-3	581	36478	Topics in Writing: Food and Culture	written communication	\$1131
WRWG 3020-3	582	36479	Topics in Writing: Narrative and the Self	written communication	\$1131
WRWG 3020-3	583	36480	Topics in Writing: Travel Writing	written communication	\$1131
WRWG 3020-3	584	36481	Topics in Writing: Travel Writing	written communication	\$1131
WRWG 3020-3	585	36482	Topics in Writing: Women Writers	written communication	\$1131
WRWG 3020-3	586	36483	Topics in Writing: Writing on Music	written communication	\$1131
WRWG 3020-3	587	36484	Topics in Writing: The Grotesque	written communication	\$1131
WRWG 3020-3	588	36485	Topics in Writing: Environmental Writing	written communication	\$1131
WRWG 3030-3	581	36487	Writing on Science and Society	written communication	\$1131
WRWG 3030-3	582	36488	Writing on Science and Society	written communication	\$1131
WRWG 3030-3	583	36489	Writing on Science and Society	written communication	\$1131
WRWG 3030-3	584	36490	Writing on Science and Society	written communication	\$1131
WRWG 3040-3	581	36491	Writing on Business and Society	written communication	\$1131
WRWG 3040-3	582	36492	Writing on Business and Society	written communication	\$1131
WRWG 3040-3	583	36493	Writing on Business and Society	written communication	\$1131
WRWG 3040-3	584	36494	Writing on Business and Society	written communication	\$1131

**Session 1 – 7 weeks: January 19 – March 4**


ATOC 1050-3	581	36375	Weather and the Atmosphere	natural science	\$1131
ENGL 3246-1	581	36412	Topics in Popular Culture: Fandom and the Digital Age	none	\$377
WRWG 3090-1	581	36495	Advanced Topics: Digital Literacies	none	\$377

**10-Week Session: February 1 – April 15**

ENGL 1500-3	581	36397	Masterpieces of British Literature	literature and the arts	\$1131
ENGL 3000-3	582	36405	Shakespeare for Non-Majors	literature and the arts	\$1131

**Session 2 – 7 weeks: March 7 – April 29**

ATOC 1060-3	581	36376	Our Changing Environment: El Nino, Ozone, and Climate	natural science	\$1131
IPHY 3430-3	581	36459	Introduction to Human Physiology	none	\$1131
WRWG 3090-2	582	36496	Advanced Topics: Digital Literacies	none	\$754



**Get Connected**  
[ce.colorado.edu/online-credit](https://ce.colorado.edu/online-credit)  
 Search for courses, find tuition information, and learn more.

## ONLINE CREDIT

### SELF-PACED ONLINE COURSES

Self-paced courses provide additional flexibility for students with busy schedules. Enroll at any time and finish in less than a semester or take up to 6 months. Projects and exams can be completed when you have time to focus on them, but plan to allow a minimum of 2 weeks of study for each credit hour taken. These courses include a broad range of web activities.

### SELF-PACED COURSES BY DEPARTMENT

Course No.–Hours	Section	Course Title	Core	Tuition
<b>ANTHROPOLOGY</b>				
ANTH 2070-3	641	Bones, Bodies, and Disease	none	\$1131
<b>ART AND ART HISTORY</b>				
ARTS 1012-3	640	Drawing for Non-Majors	none	\$1131
<b>ASTROPHYSICAL AND PLANETARY SCIENCES</b>				
ASTR 1000-3	640	The Solar System	natural science	\$1131
<b>COMMUNICATION</b>				
COMM 2400-3	642	Discourse, Culture and Identities	human diversity	\$1131
<b>ECONOMICS</b>				
ECON 2010-4	640	Principles of Microeconomics	contemporary societies	\$1508
ECON 2020-4	640	Principles of Macroeconomics	contemporary societies	\$1508
ECON 3403-3	640	International Economics and Policy	contemporary societies	\$1131
ECON 4111-3	640	Money and Banking Systems	none	\$1131
<b>EDUCATION</b>				
EDUC 3621-3	641	Art for the Elementary Teacher	none	\$1131
EDUC 4161-3	641	Children's Literature	none	\$1131
<b>ENGLISH</b>				
ENGL 1260-3	640	Introduction to Women's Literature	human diversity	\$1131
ENGL 1500-3	640	Masterpieces of British Literature	literature and the arts	\$1131
ENGL 1600-3	641	Masterpieces of American Literature	literature and the arts	\$1131
ENGL 2655-3	641	Introduction to American Literature I	none	\$1131
ENGL 2665-3	641	Introduction to American Literature 2	none	\$1131
ENGL 3116-3	640	Topics in Advanced Theory-Postmodernism	none	\$1131
<b>GEOGRAPHY</b>				
GEOG 3251-3	640	Mountain Geography	none	\$1131
<b>GEOLOGICAL SCIENCES</b>				
GEOL 1010-3	641	Introduction to Geology	natural science	\$1131
GEOL 1020-3	640	Introduction to Earth History	natural science	\$1131
<b>HISTORY</b>				
HIST 1011-3	640	Greeks, Romans, Kings & Crusaders: European History to 1600	historical context	\$1131
HIST 1012-3	640	Empire, Revolution and Global War: European History Since 1600	historical context	\$1131
HIST 1015-3	640	History of the United States to 1865	United States context	\$1131
HIST 1025-3	640	History of the United States since 1865	United States context	\$1131

**SELF-PACED COURSES BY DEPARTMENT** (continued)

Course No.–Hours	Section	Course Title	Core	Tuition
<b>MATHEMATICS</b>				
MATH 1021-3	640	College Trigonometry	none	\$1131
MATH 1081-3	640	Calculus for Social Science and Business	quantitative reasoning and mathematical skills	\$1131
<b>MEDIA STUDIES</b>				
MDST 2002-3	640	Media and Communication History	none	\$1131
<b>PEACE AND CONFLICT STUDIES</b>				
PACS 3800-3	640	Topics in Peace and Conflict Studies	none	\$1131
PACS 4500-3	640	Senior Seminar in Peace and Conflict Studies	none	\$1131
<b>PHILOSOPHY</b>				
PHIL 1100-3	641	Ethics	ideals and values	\$1131
PHIL 3140-3	641	Environmental Ethics	ideals and values	\$1131
<b>PSYCHOLOGY</b>				
PSYC 1001-3	640	General Psychology	none	\$1131
PSYC 1001-3	642	General Psychology	none	\$1131
PSYC 2012-3	641	Biological Psychology	natural science	\$1131
PSYC 2111-4	640	Psychological Science I: Statistics	none	\$1508
PSYC 2606-3	641	Social Psychology	contemporary societies	\$1131
PSYC 3303-3	641	Abnormal Psychology	none	\$1131
PSYC 3456-3	640	Psychology of Personality	none	\$1131
PSYC 3511-3	640	History of Psychology	none	\$1131
PSYC 3684-3	641	Developmental Psychology	none	\$1131
<b>SOCIOLOGY</b>				
SOCY 1001-3	640	Introduction to Sociology	contemporary societies	\$1131
SOCY 4014-3	641	Criminology	none	\$1131
SOCY 4086-3	641	Family and Society	none	\$1131

**Sarah Alhumaidan**

Principles of Microeconomics

**“I have a scholarship through my company to study geophysics. Economics is required for my major and I chose to take it as an evening class because it fit well with my schedule. I enjoy what I am learning and know it will help me a lot in my job.”**





## HIGH SCHOOL CONCURRENT

### Matthew Moniz

**“Whatever subject you’re interested in, you can find a class for it at CU. This semester, I really wanted to take the Geography of Mountains. My high school requires a geography class, but they only offer a general one. Geography of Mountains technically counts as that requirement, so I can take something I’m really interested in and get both high school and college credit. I feel confident going into college as a result of my experience. Even if you take only one or two classes at CU-Boulder, the program gives you a great idea of what college really is like.”**



## EARN COLLEGE CREDITS WHILE YOU’RE IN HIGH SCHOOL

The High School Concurrent Program offers motivated students with an interest in the challenge of university coursework the opportunity to enroll in credit courses at CU-Boulder. University credit earned may also be applied toward high school graduation requirements.

### Reach Your Goal: Get Ahead or Explore Something New

Many students use High School Concurrent as an opportunity to advance in math, science, modern languages, and other subjects. Others use it as an opportunity to try something new. Students enroll in CU-Boulder main campus courses on a space-available basis via a program called ACCESS (see p. 18).

### Cost

High School Concurrent students pay ACCESS tuition rates and may be eligible to apply for the College Opportunity Fund. Visit [cof.college-assist.org](http://cof.college-assist.org) for more information. A full tuition schedule is available at [ce.colorado.edu/tuition](http://ce.colorado.edu/tuition).

High school juniors and seniors attending a public school may also be eligible for tuition assistance from their school district during the fall and spring semesters.

### How to Enroll

Participation in the High School Concurrent Program requires written permission from a high school counselor and a parent/guardian. Notify your counselor at least two months before you intend to enroll. Full eligibility information is available at [ce.colorado.edu/high-school](http://ce.colorado.edu/high-school). Email questions to [tisdalek@colorado.edu](mailto:tisdalek@colorado.edu) or call 303-735-5456.

*Matt earned his diploma from Boulder High School in December 2015. At the time of his graduation, he had earned enough credit at CU-Boulder to be considered a rising college junior. He intends to major in molecular biology this fall. Continuing Education is proud of Matt’s accomplishments and wishes him the very best in his future endeavors.*

## MUSIC LESSONS



### Charles Wofford

Instructor

**“Most people are familiar with the various learning modalities, like visual, kinesthetic and auditory. To be a really well rounded musician, one needs to approach learning from each of these angles simultaneously. We need the kinesthetic ability to be attached to our instrument, the visual ability to read or notate music, and the aural ability to listen to music, among others. When we can learn music from all these angles at once, then we can learn anything that way. It applies to everything in life.”**

### APPLIED MUSIC PROGRAM

Earn 2 hours of CU credit while receiving music lessons from a CU-Boulder College of Music instructor.

#### Individual and Group Instruction

The Applied Music Program allows students to earn CU credit while receiving private or group music lessons. All Applied Music instructors are professional musicians and experienced teachers in the CU-Boulder College of Music. Styles include classical, jazz, and rock.

Search for available group (MUEL) and one-on-one (PMUS) sections at [ce.colorado.edu](http://ce.colorado.edu). Students must furnish their own instruments, except piano and drum set.

#### Cost

**Tuition for 2 credits: \$652**

Visit [ce.colorado.edu/tuition](http://ce.colorado.edu/tuition) for complete tuition schedules.

#### Enrollment Information

Visit [ce.colorado.edu/applied-music](http://ce.colorado.edu/applied-music) to learn more, email [apppmusic@colorado.edu](mailto:apppmusic@colorado.edu), or call 303-492-5950. Current CU-Boulder students can enroll through [MyCUInfo.colorado.edu](http://MyCUInfo.colorado.edu).

### FACULTY AND STAFF DISCOUNTS

University of Colorado faculty and staff on at least a half-time appointment are eligible for a 20% discount on both Applied Music courses and the Youth Piano Program.

### YOUTH PIANO PROGRAM

The CU Youth Piano Program trains students, ages 6-17 in weekly group and private lessons. Students learn from experienced instructors from the CU-Boulder College of Music.

#### Cost

Lesson duration and cost are as follows:

\$30 for 30 minutes of instruction

\$45 for 45 minutes of instruction

\$60 for 60 minutes of instruction

#### Contact Us

Visit [ce.colorado.edu/youth-piano](http://ce.colorado.edu/youth-piano) for full program details. For enrollment and payment information, contact Amy Li at 303-492-5950 or email [yyli@colorado.edu](mailto:yyli@colorado.edu).

## SPEECH, LANGUAGE, AND HEARING SCIENCES

### Miranda Aragon

Speech Language Pathology  
Assistant Certificate Program

**“I loved all my undergraduate classes, but I was excited to start working directly with clients to apply what I was learning in class. Through this program I was able to work one on one with kids. It is really special to see them grow so much within such a short period of time.”**



### ONLINE SPEECH-LANGUAGE PATHOLOGY PROGRAMS

Move forward on a rewarding career path in Speech Language Pathology that addresses the demand for qualified personnel to work with students in our public schools. These professional programs are offered in cooperation with the CU-Boulder Department of Speech, Language, and Hearing Sciences.

#### Speech-Language Pathology Prerequisites (SLPP) Program

This online program provides the foundation necessary for a Speech-Language Pathology Assistant (SLPA) Certification Program or a Graduate Speech-Language Pathology (MA-SLP) Program to individuals with a BA/BS degree. Students complete 24 credits of prerequisite coursework over 4 semesters designed to meet admission requirements. Students should, however, verify with their intended program of study that SLPP courses meet their requirements, as individual institutions decide what prerequisites are accepted.

For more information, visit [slhs.colorado.edu/slpp-online](https://slhs.colorado.edu/slpp-online) or email [slpp@colorado.edu](mailto:slpp@colorado.edu).

#### Speech-Language Pathology Assistant (SLPA) Certificate Program

The online SLPA Certificate allows recipients to meet the requirements for authorization to work in Colorado public schools. Students develop the knowledge and skills to work under the supervision of a Master's Level SLP. The certificate is appropriate for individuals in their senior year of their undergraduate program, or individuals who have completed a bachelor's in speech pathology and audiology.

For more information, visit [slhs.colorado.edu/slpa-certificate-program](https://slhs.colorado.edu/slpa-certificate-program).



#### Learn More

More information, including application deadlines, is available at [slhs.colorado.edu/online-programs](https://slhs.colorado.edu/online-programs)

## ADDITIONAL CREDIT PROGRAMS

### EARN CREDIT FROM CU-BOULDER

Continuing Education offers students a number of nontraditional ways to access the educational resources of CU-Boulder and to earn credit while learning from the university's distinguished faculty.

#### ACCESS Program

##### Available Credit Courses for Eligible Special Students

The ACCESS Program is an opportunity to explore CU-Boulder courses as a nondegree (not formally admitted to a degree program) student. You can learn about the university, explore academic departments, meet faculty, and earn credit.

Our capable staff can provide academic advising, financial aid, and career advising through in-person or telephone appointments. Visit [ce.colorado.edu/advising](http://ce.colorado.edu/advising) to set up a free appointment.

##### Apply Now

Nondegree students enroll after most main campus students, but that doesn't mean you have to wait to get started. We are

currently accepting applications for the spring 2016 semester.

- Enrollment begins Friday, January 8
- Classes begin Monday, January 11

Call 303-492-5148 for more information or visit [ce.colorado.edu/access](http://ce.colorado.edu/access).

#### Individualized Instruction

For special cases when a student needs a course that is unavailable. Visit [ce.colorado.edu/advising](http://ce.colorado.edu/advising) or call 303-492-5148 to schedule an appointment with an advisor to talk about your options.

#### Visiting International Student Program (VISP)

The Visiting International Student Program (VISP) allows students to enroll in

undergraduate or graduate courses at CU-Boulder and earn credit as a nondegree international student. You can take courses for one semester or up to three consecutive semesters (i.e. fall, spring, summer).

VISP students must enroll as full-time students:

- 12 undergraduate credits in fall/spring semesters
- 6 undergraduate credits in summer session
- 6 graduate credits in fall/spring semesters
- 3 graduate credits in summer session

#### How to Enroll

To apply, visit [ce.colorado.edu/visp](http://ce.colorado.edu/visp) and complete the VISP application and supporting enrollment materials.

If you are accepted, we can provide assistance in obtaining an I-20 to apply for an F1 student visa. Once enrolled, Continuing Education will also provide assistance with academic advising, housing, health insurance, travel information, and more.

Email [visp@colorado.edu](mailto:visp@colorado.edu) with questions about the program or the application process.

## CU COMPLETE SERVICE



Patrick Pulis

"The biggest challenges lead to our greatest achievements."

### NOW IS THE TIME TO COMPLETE YOUR DEGREE

Your degree is closer than you think. CU Complete offers academic guidance and potential financial support to students they achieve the degree they started.

#### Get The Support You Need To Complete Your Degree

Returning to school can be intimidating, but we are here to guide you toward your goal of completing a bachelor's degree. CU Complete is a service designed to help former CU-Boulder students complete their degrees at CU. Our advisors understand the challenges facing adult students and will help you create an individual academic path toward degree completion. Financial support may also be available.

#### CU Complete Scholarship

Continuing Education has allocated scholarship funds to assist former CU-Boulder students who are trying to finish their CU bachelor's degree.

#### Your Degree is Closer Than You Think

If you are ready to work toward completing your degree, complete the intake form available at [cucomplete.colorado.edu](http://cucomplete.colorado.edu)

#### Learn more

[cucomplete.colorado.edu](http://cucomplete.colorado.edu).

## POST-BACCALAUREATE HEALTH PROFESSIONS PROGRAM

### Julie Emmond

**“After leaving a career in banking to go into medicine, I was drawn to CU’s program because of the cohort model. It puts you in a group of highly motivated career changers. All of us are sure that this is the direction we want to go, especially having had time in other careers to find our passion. Between the cohort and the many resources available to us through the program, I don’t feel I’m going it alone. I’ve had a built-in group from day one that will join me in the process of applying to med school.”**



### WHERE TO BEGIN YOUR NEXT CAREER

The Post-Baccalaureate Health Professions Program is designed for recent college graduates and “career changers” with a desire to transition into healthcare.

This program was created for academically successful individuals who have an informed understanding of the health profession they seek to enter, but have not completed the prerequisite science courses necessary to apply to graduate medical programs. Students receive individual advising, tutoring, application assistance, and special programming to help them reach their goals.

#### Designed For Students With:

- A strong academic background. Most applicants will have an undergraduate GPA of 3.3 or above
- A bachelor’s degree in a non-science field
- Completion of college algebra and trigonometry, or the equivalent
- Meaningful clinical experience in a health-care setting, such as shadowing medical professionals, volunteering with patients, or employment in a healthcare field.

#### Course Information

The schedule of this intensive yearlong post-baccalaureate program begins in the summer, followed by a fall and a spring semester.

#### Summer

- General Chemistry 1 with Lab
- General Chemistry 2 with Lab

#### Fall

- Introduction to Cellular and Molecular Biology with Lab
- Organic Chemistry 1 with Lab
- General Physics 1 with Lab

#### Spring

- Principles of Genetics with Lab
- Biochemistry
- General Physics 2 with Lab

Students may choose to complete other courses in additional semesters, including Anatomy, Physiology, and Organic Chemistry 2.

#### Apply for the 2016 Class

Applications will be accepted on a rolling basis beginning in October 2015.

Visit [premed.colorado.edu](http://premed.colorado.edu) for more information or email [postbacmd@colorado.edu](mailto:postbacmd@colorado.edu).

## SUMMER SESSION



### LOOK AHEAD TO SUMMER 2016!

Summer Session 2016 will offer you the opportunity to earn academic credit, satisfy your curiosity, meet major or minor requirements, and be part of our summer community. The diverse population of students from CU and institutions across the country, high school students, and teachers and other professionals makes Summer Session a unique learning experience. We also welcome international students to be part of summer in Boulder.

#### Summer Offerings

Many of CU's most popular and sought-after courses are offered during the summer terms. In addition, special opportunities include Maymester, Augmester, Featured Classes and the FIRST Program.

#### Maymester or Augmester 3 weeks. 3 credits.

Complete a core or major requirement in just three weeks with the intensive, single-course focus of Maymester and Augmester. Gain knowledge and momentum while being immersed in an interactive environment.

#### Featured Classes

Explore the possibilities with new course offerings. Summer Session offers greater flexibility and smaller class sizes with increased engagement. Move forward into a new area. Check out Featured Classes and find one that's right for you.

#### Faculty-in-Residence Summer Term (FIRST)

Learn from prestigious, world-class faculty that only teach on the Boulder campus during the summer. These renowned scholars bring a wealth of experience,

knowledge, and perspective to the classroom. Take this opportunity to be challenged and inspired.

#### Online Classes

Learn on your terms. Online classes offered in the summer are rigorous, yet the schedule is flexible. Engage with instructors and classmates in innovative ways, such as discussion groups, message boards, and video lectures.

#### Summer 2016 Schedule

Session M (Maymester):	May 9-26
Session A (5 weeks):	May 31-July 1
Session B (5 weeks):	July 5-August 5
Session C (8 weeks):	May 31-July 22
Session D (10 weeks):	May 31-August 5
Session G (Augmester):	August 1-18

#### Stay Up To Date

Email [SummerInfo@Colorado.edu](mailto:SummerInfo@Colorado.edu) with questions or visit [summer.colorado.edu](http://summer.colorado.edu) for the most up-to-date information about Summer Session.

## CU ON THE WEEKEND

### Fran Bagenal

New Horizons Mission to Pluto

**“Since Clyde Tombaugh discovered Pluto in 1930 there have been rare breakthroughs in our knowledge of this small icy object on the edge of the solar system. The Hubble Space Telescope pictures show just a fuzzy blob. New Horizons started obtaining better pictures than Hubble in spring 2015, but we were just not prepared for the absolutely stunning pictures of the surface of Pluto and its moons.”**



## CU ON THE WEEKEND

**CU on the Weekend is a series of free presentations led by some of CU-Boulder’s most accomplished and dynamic faculty. These programs are designed to share some of the intriguing research and creative work conducted at CU-Boulder. This spring, we will feature topics ranging from the humor code to NASA’s New Horizons mission to Pluto.**

### **Christians, Muslims and Jews in the Medieval Mediterranean, or Everything You Always Wanted to Know About the Holy War But Were Afraid to Ask**

*Brian Catlos, Professor of Religious Studies*

Saturday, Jan. 30, 1-3 p.m.

Jennie Smoly Caruthers Biotechnology Building, Butcher Auditorium

### **Cracking the Humor Code**

*Peter McGraw, Associate Professor of Marketing*

Saturday, Feb. 13, 2-4 p.m.

Jennie Smoly Caruthers Biotechnology Building, Butcher Auditorium

### **The Animal Self: Insights from Sociology**

*Leslie Irvine, Professor of Sociology*

Saturday, Feb. 27, 1-3 p.m.

Jennie Smoly Caruthers Biotechnology Building, Butcher Auditorium

### **The Beginnings of Beer in the Ancient World**

*Travis Rupp, Instructor of Classics*

Saturday, March 5, 1-3 p.m.

Jennie Smoly Caruthers Biotechnology Building, Butcher Auditorium

### **CU in the Great War: Its Toll on Faculty, Students and the One Black Woman Trailblazer**

*Polly McLean, Associate Professor of Media Studies*

Saturday, April 16, 1-3 p.m.

Jennie Smoly Caruthers Biotechnology Building, Butcher Auditorium

### **New Horizons Mission to Pluto**

*Fran Bagenal, Professor of Astrophysical and Planetary Sciences and Co-investigator for the NASA New Horizons Mission*

Saturday, April 30, 1-3 p.m.

Fiske Planetarium\*

Seating is limited to the first 200 people.

Fiske will distribute free tickets starting at noon on April 30. Doors to the theater will open at 12:45 p.m., and tickets are required for entrance to the theater. No advance reservations will be accepted.

### **Free and Open to the Public**

Advance registration is not necessary for CU on the Weekend programs. Seating is available on a first-come, first-served basis, and classrooms open 30 minutes before start time, unless noted. Tickets are only required for the April 30 program.

### **Stay informed**

Sign up for email reminders for one or more programs via the CU on the Weekend webpage. All programs are subject to change. The CU on the Weekend webpage is the primary source for the most up-to-date information, including program descriptions, instructor bios, parking information, and more.

For a complete schedule of CU on the Weekend spring programs visit [ce.colorado.edu/weekend](http://ce.colorado.edu/weekend).

## International English Center

## HOLLY WOODSOME SROYMALAI

“We have the potential to make a

# HUGE IMPACT

on our students’ lives; the experience they have here can influence their future.”

“When students participate in one of our short-term programs, they get a taste of what is possible and inspiration for their educational future,” says Holly of the IEC’s various programs that are coordinated with governments and universities from around the world. “When students are here for a few weeks, they experience the language, culture, and environment in an intense and meaningful way. It can be so eye opening.”

## CREATING A BRIDGE BETWEEN CU-BOULDER AND THE WORLD

**Over the last 40 years the International English Center (IEC) has helped over 20,000 international students learn and master English. We are proud to continue to bring quality English instruction to students from across the world and make a lasting impact in their lives. This was exemplified when the children of our former students began enrolling at the IEC.**

The International English Center offers English as a Second Language (ESL) programs for international students, community residents, or interested visitors from other countries. In a safe, nurturing, and dynamic environment, students take academically challenging course work in writing, reading, listening, and speaking. Grammar and vocabulary are incorporated into all classes, enabling students to develop their English language skills efficiently. Students also choose an elective course, which best meets their needs and interests. Electives include such topics as: business

English, English for STEM, test preparation, pronunciation, academic vocabulary, sports and nutrition, life skills, and volunteering.

Additionally, the IEC provides workshops on U.S. higher education, a culture hour, reading club, tutoring center, and many other cultural, community, and sports activities. Students have access to university libraries with a rich source of educational and research materials along with two computer labs at the IEC. They gain confidence as they experience the beauty of Boulder and

Colorado and participate in many activities on campus, including conversation groups, lectures, and performances.

All IEC faculty members have master’s degrees and extensive teaching experience in academic English language programs. They also use the most current language learning methodology and materials. The International English Center is fully accredited by the Commission on English Language Program Accreditation (CEA). We are also a member of UCIEP (Consortium of University and College Intensive English Programs) as well as EnglishUSA (formally, the American Association of Intensive English Programs).

Our students go on to attend the University of Colorado, Colorado School of Mines, the University of Denver, Colorado State University, and dozens of other institutions.



## INTERNATIONAL ENGLISH CENTER



### Intensive English Program (IEP)

This program is especially designed for international students who are preparing to enter a university or graduate program in the U.S. It is also appropriate for working professionals and community members who want to improve their academic or professional English. The IEP consists of five eight-week sessions of full-time English language study (20 hours per week). Students participate in writing, reading, listening & speaking, and elective courses. New students take a placement test, which determines their level. There are eight levels in the program: Introductory, Basic 1, Basic 2, Intermediate 1, Intermediate 2, Intermediate 3, Advanced 1, and Advanced 2. Class size is 12-15 students on average.

With permission of the director, advanced level students may be eligible to enroll in University of Colorado Boulder classes.

A limited number of scholarships are available for immigrants and refugees who demonstrate financial need. For more information about scholarships, please visit [iec.colorado.edu](http://iec.colorado.edu).

Certificates of completion are offered.

### Non-Intensive Academic and Professional English Program

The IEC offers non-intensive credit courses in accent reduction, academic writing, and presentation skills, designed for undergraduate and graduate students as well as working professionals who need to improve specific areas in their English language proficiency.

### ESL Academic Bridge Program

The ESL Academic Bridge Program is for conditionally admitted students who have not met the English language proficiency requirements for admission into an undergraduate degree program at the University of Colorado Boulder. Students who choose to enroll in this program must successfully complete the program prior to beginning their degree studies at the university.



### Connect with the IEC

Visit [iec.colorado.edu](http://iec.colorado.edu) or call 303-492-5547 for more information.

The IEC offers five start dates a year. Take the first step toward your English as a Second Language education today and apply online at [iec.colorado.edu/how-to-apply](http://iec.colorado.edu/how-to-apply).

Summer Camp Instructor

JIFFER HARRIMAN

“I use music to engage interest in technology so students can follow their

**PASSION**

while learning some very useful skills.”

“Having different entry points to learning is really important, especially for kids,” says Jiffer, whose doctorate work is on the creative use of technology to enable alternate ways of making music. “When they have a personal motivation like music, they’re more likely to dig in and learn the details of the hardware and software that will allow them to design and control sounds. By starting with music as the foundation, we can engage a different audience for the technology than would otherwise be drawn to it.”

## EXPLORE STEM EDUCATION FOR K-12

**CU Science Discovery has been inspiring future generations of scientists and engineers since 1983. Our mission is to heighten interest and increase literacy in science, technology, engineering, and math (STEM) by providing hands-on experiences that connect K-12 students and teachers to current CU science. We collaborate with faculty and capitalize on CU-Boulder’s scientific resources, facilities, and expertise to excite students about a variety of STEM fields and careers.**

### Summer Camps and After-School Classes

Students ages 5-18 can enroll in a wide variety of summer camps and after-school classes taught by enthusiastic, knowledgeable instructors (often STEM graduate students with teaching experience). Camps and classes offer access to university and community resources, small class sizes (10-16 students), and a variety of laboratory and field experiences.

Camps such as Programming with Python, Sound Hackers, and Craft Technology are designed to enrich student understanding and motivate them to explore science topics in greater depth. Advanced courses, such as Creative Communications: Infographic Design, Materials Science: Biomimicry, and Med School Experience, offer opportunities for high school students to learn more about STEM majors and career opportunities.

Visit [sciencediscovery.colorado.edu](http://sciencediscovery.colorado.edu) for a complete list of current camps and classes.

### Girls in STEM

By serving as the convening organization for the Colorado Collaborative for Girls in STEM, a statewide affiliate of the NSF-funded National Girls Collaborative Project, Science Discovery is working to advance gender equity in STEM. The model used brings together organizations throughout the state to expend opportunities for girls and women in STEM fields.

### Classroom Presentations

Science Discovery brings CU’s cutting-edge science and scientists to classrooms, libraries, and community centers throughout Colorado. Interactive presentations and hands-on workshops introduce students to subjects including chemistry, physiology, optics, genetics, sustainability, engineering, and biotechnology to enrich STEM education statewide. Each program’s content and activities support the Colorado Academic Standards and enrich student learning through fun, hands-on experiences.

Email [sfcu@colorado.edu](mailto:sfcu@colorado.edu) with questions or to request a classroom presentation.

**SCIENCE DISCOVERY**



**STEM Workshops and Teacher Professional Development**

Full-day STEM Workshops and related Teacher Professional Development Workshops provide an extended learning experience for elementary and middle school teachers and students. Teachers and students rotate through three different hands-on stations together. Topics include engineering, renewable energy, life science, Earth systems science, and physical science. STEM Workshops and Teacher Professional Development Workshops are conducted on the CU Campus and at school sites across the state, including both urban and rural locations. Contact School and Teacher Programs at [sfcu@colorado.edu](mailto:sfcu@colorado.edu) to bring a STEM Workshop to your community!

**Field Science Programs**

Science Discovery provides a variety of opportunities for students and teachers to participate in hands-on science while exploring the great outdoors. Throughout the school year, we offer field study programs that explore Colorado’s ecosystems, such as Stream Ecology and Winter Ecology on Snowshoes. The Mountain Research

Experience, offered in collaboration with CU’s Department of Ecology and Evolutionary Biology and INSTAAR, provides high school students and teachers the opportunity to conduct ecological field research while living and working at CU’s Mountain Research Station. Students and teachers can dig in and experience field science research firsthand.

**OPPORTUNITIES FOR TEENS**

**STEM Research Experience**

During this 4-week summer program, CU-Boulder faculty and graduate students mentor students with particular research interests. Past research projects have explored the fields of biochemistry, ecology, evolutionary biology, mechanical engineering and physiology.

**Non-Credit STEM Academies**

These 3-week long programs are designed for highly motivated students looking to delve deeper into specific STEM fields and gain exposure to life at a top university. CU-Boulder faculty and graduate students guide laboratory work, field trips, guest lectures and discussion groups.

**Teen Science Café**

Boulder and Denver area teens have the opportunity to meet local scientists in a fun and informal setting. Events are held monthly in both Boulder and Denver. The Youth Leadership Team helps guide the program and runs the café events, which feature a wide range of STEM topics.



**Get Involved**

Science Discovery programs impact more than 20,000 students and teachers across Colorado each year.

Visit [sciencediscovery.colorado.edu](http://sciencediscovery.colorado.edu) to learn more about all upcoming programs and events.

## Colorado Archaeology in the Classroom

STEVE LEKSON

“It’s always a thrill for me to handle these artifacts and it’s even more thrilling to

**S H A R E**

them with 4th graders.”

“I hope it inspires. It’s the tip of the iceberg for what they can learn,” says Steve Lekson, CU-Boulder professor of anthropology and archeology curator for the museum. “This is what I do for a living, but it’s still exciting for me.”

## FROM THE MUSEUM TO THE CLASSROOM

**Known for its expansive collections, the University of Colorado Museum of Natural History is also building an impressive collection of educational classroom kits. The portable fossils and now archaeology kits provide standards-based curriculum and real or reproduced artifacts and fossils offering an exceptionally hands-on learning experience for 4th grade classes across Colorado.**

Anyone who has walked the halls of the CU-Boulder Museum of Natural History can attest to the museum’s wealth of educational resources. Its collections number nearly 5 million objects, and its exhibition galleries are free and open to the public seven days a week. Yet even with more than 40,000 visitors annually, the museum’s offerings are not confined to campus, thanks to an ever-expanding assortment of portable fossil and archaeology kits free for Colorado classrooms.

When the Colorado Department of Education adopted new state standards in 2009, it included for the first time the study of fossils. The Fossils in the Classroom project was

created in response to requests from schools in need of fossil information and materials.

Museum staff partnered with curators, faculty, and local teachers to develop and refine kits that contain standards-based curriculum and real and cast fossils. The backbone of the kits’ contents is based on the research of Jaelyn Eberle, curator of fossil vertebrates paleontology and assistant professor of geological sciences. The units allow students to describe, measure, predict, and record the specimens, and they can compare their observations to the work of other students and CU-Boulder paleontologists.

Under the direction of Senior Educator Jim Hakala, the museum continues to shape and grow the fossil kits since the first prototype was developed in 2010. There are now more than 275 fossil kits in 33 school districts and 266 schools in locations such as Fort Morgan, Durango, Canon City, Trinidad, and many more. Nearly 20,000 4th graders have experienced the kits in their classes, and the teacher network continues to expand since the early days when Hakala first began contacting school districts.

“Once the teachers realized I was not kidding, they welcomed us,” Hakala said. “Evaluation data supports the success of the kit. It has become something they embrace very strongly and want to bring to other teachers and students.

“I am trying to nurture those relationships to strengthen the ties, not just between me and the teachers, but between them and the museum and potentially CU-Boulder.”

Leveraging the popularity of the fossil kits and the loyal teacher network, Hakala has developed archaeology kits as part of the Colorado Archaeology in the Classroom project. Like the fossil program, the archaeology project has been supported by

## OUTREACH AND ENGAGEMENT



Steve Lekson, left, and Jim Hakala, right, examine the contents of an archaeology kit.

CU-Boulder Outreach Awards. The archaeology kits contain the Federal Bureau of Land Management's respected curriculum and hands-on fire-starting tools, casts of stone projectile points, pottery fragments, and more. The materials are based on the cutting-edge research of Steve Lekson, professor of anthropology and the museum's archaeology curator. Lekson's work focuses on the ancient southwest, and he helps identify authentic and replica artifacts for inclusion in the kits.

"This is what I do for a living, but it's still exciting for me," said Lekson, examining a piece of pottery from a kit. "It's always a thrill for me to handle these artifacts and it's even more thrilling to share them with 4th graders. I hope it inspires. It's the tip of the iceberg for what they can learn."

Nearly 45 archaeology kits are in residence in school districts, free of charge. The feedback from teachers is immensely positive, with 100 percent of teachers indicating that students initiated novel discussions about Colorado prehistory, and 100 percent said they intend to re-use the kits.

With the support of the educators, museum staff, and a recent outreach award, Hakala

aims to increase the archaeology resources by another 25 kits this year while continually updating the fossil kits as well.

"This is certainly a labor of love for me, but there are a lot of other factors that really make a difference," Hakala said.

"The support that I've gotten from the museum curatorial, collections, and administration staff is tremendously important. That's made all the difference in the world. I don't have the expertise, but I do have curators like Steve and Jaelyn that enable this project to go forward and expand into Colorado classrooms."

### About Outreach and Engagement at CU-Boulder

Extending educational resources to the citizens and communities of our state, region, and world is central to the mission of the university and the Division of Continuing Education. The Office for Outreach and Engagement, housed in the Continuing Education, supports campus-wide outreach efforts and connects the university's research, teaching, and creative work of faculty, staff, and students with communities throughout Colorado and beyond.

The office also provides administrative support and oversight for the CU-Boulder Outreach Committee, which distributes funding for outreach projects that involve faculty, staff, and students in mutually beneficial partnerships with external constituents. These awards are made possible by funds from the Office of the Chancellor, the Office of the Provost, and Continuing Education.



### Get Connected

Learn more about CU-Boulder's outreach and engagement programs and initiatives at [outreach.colorado.edu](http://outreach.colorado.edu)



### Silvie Kilworth

Manager, Extraordinary Program

**“Many departments on campus have unique needs for offering their courses to students. We provide alternatives to conventional offerings in terms of non-traditional students, customized schedules, and specific financial arrangements. The program’s flexibility, along with Continuing Education’s expertise and can-do approach, enables us to find solutions that benefit students.”**

## YOU’VE GOT QUESTIONS. WE’VE GOT ANSWERS.

Lifelong learning doesn’t mean putting your job, family, or life on hold. Continuing Education staff can help you sort through your academic options, identify financial aid resources, prepare for a career, and more.

## STUDENT SUPPORT

Our dedicated staff is here to support you whether you are returning to CU, exploring university courses for the first time, or looking for flexible ways to complete your degree.

### Academic Advising

Our academic advisors can help you understand the university options and choose the best course of action. Schedule an appointment at [ce.colorado.edu/advising](http://ce.colorado.edu/advising).

### Financial Assistance

Our financial aid advisor will work with you to determine if there are funds available to help you meet your educational goals. Visit [ce.colorado.edu/financial-aid](http://ce.colorado.edu/financial-aid) for more information or to schedule an appointment with a Financial Aid Advisor.

Nondegree students (not formally admitted to a degree program) age 22 or older can apply for the Nontraditional Student Scholarships awarded each semester. An application and complete information including eligibility, requirements, and deadlines are available at [ce.colorado.edu/financial-support](http://ce.colorado.edu/financial-support).

## APPLY AND ENROLL

Earn CU-Boulder credit toward your degree or for personal fulfillment. Getting started is easy.

If you are new to CU, or it has been more than 12 months since you enrolled in a course, simply complete and submit the

online Continuing Education Application at [ce.colorado.edu/enroll](http://ce.colorado.edu/enroll). We will process your application and send you all of the information you need to enroll in courses using the student portal, MyCUInfo.

If you have been enrolled in a CU course within the past 12 months, call 303-492-5148. We can activate your term record. You will then be able to self-enroll online at [MyCUInfo.colorado.edu](http://MyCUInfo.colorado.edu).

## LEARN MORE

[ce.colorado.edu](http://ce.colorado.edu)

Search for courses, find tuition rates and learn more about all the programs available through Continuing Education.

## GETTING STARTED

### Stay Up-To-Date on Your Courses

Occasionally information changes after this catalog is printed. It’s recommended that you verify your course information, such as course locations, cancellations, etc., before traveling to campus. Find the most up-to-date information online at [ce.colorado.edu](http://ce.colorado.edu).

We also try to notify enrolled students of course changes by email.

### Books and Supplies

Required course materials are available at the CU Book Store in the University Memorial Center on campus. Call 303-492-6411 or visit [www.cubookstore.com](http://www.cubookstore.com)

### Course Locations and Parking

Course locations are listed in each course description online. Many campus parking lots offer \$4.00 parking after 5 pm and on Saturdays. Some are free during evenings and weekends. The Campus Map at [www.colorado.edu/campusmap](http://www.colorado.edu/campusmap) gives both

building and evening and weekend parking lot locations. To skip parking altogether, take the bus to campus.

### Accessing Campus Services

As a Continuing Education student, you may be eligible to use the campus libraries and computer labs. To gain access to these campus services, purchase a student ID, the Buff OneCard, for \$30 at the Buff OneCard office in the Center for Community, room N180, by presenting a copy of your student schedule and photo ID. Visit [www.BuffOneCard.com](http://www.BuffOneCard.com) for more information. A government issued ID may also be accepted.

### Dropping A Class

Sometimes plans change. You can drop a course through MyCUInfo or by emailing [ceregistration@colorado.edu](mailto:ceregistration@colorado.edu). Tuition adjustments are based on when you drop your course. See the Important Dates for Evening Credit on p. 4, Online Credit on p. 10, and ACCESS at [ce.colorado.edu](http://ce.colorado.edu).

Please note: Nonattendance does not constitute withdrawal and you may still be charged for your courses unless you officially withdraw before the drop deadline. Call us at 303-492-5148 or 800-331-2801 (TTY 303-492-8905) if you need any help or for additional information visit [ce.colorado.edu](http://ce.colorado.edu).

## TUITION AND PAYMENTS

Continuing Education tuition is dependent upon the type of course or program you enroll in and your residency classification. Non-resident students taking 4 or more credit hours through Continuing Education may be subject to out-of-state tuition assessment.

Visit [ce.colorado.edu/tuition](http://ce.colorado.edu/tuition) for complete tuition schedules.

## ENROLLMENT AND STUDENT RESOURCES

We offer a full service bursar/accounting office to make paying for your courses easier. Tuition payments can be made online at **MyCUInfo.colorado.edu**. We also accept payments in the form of cash, check, credit card (VISA, MasterCard, Discover, and American Express), or online from your checking or savings account. Please note that payments made to the University of Colorado using a credit or debit card cannot be made over the phone and will be charged an additional nonrefundable 2.75% service fee by the card processor.

If you need confirmation of enrollment and payment of tuition for employer reimbursement, please contact us at 303-492-2212 or by email at [cebursar@colorado.edu](mailto:cebursar@colorado.edu).

### CAREER SERVICES

We provide individual and group options to help you get ahead in your career.

#### Individual Counseling

Nondegree students are eligible for eight individual career-advising sessions each term they are enrolled. This comprehensive counseling includes career exploration and planning, job search assistance, and other career-related guidance. Visit [ce.colorado.edu/resources/career-advising](http://ce.colorado.edu/resources/career-advising) to schedule an appointment.

#### Career Exploration Workshop

Discover your career passion through this hands-on class, lead by Continuing Ed's experienced Career Advisor. Begin to identify who you are through self-assessment of your interests, values, skills, and personality type, in addition to exploring how this information relates to a career. Find a career direction that will bring satisfaction, whether you are making a change, contemplating post-retirement options, or just beginning to enter the job market.

For up-to-date enrollment information, visit [ce.colorado.edu](http://ce.colorado.edu) and search for CSVC 1010.

### AUDITOR PROGRAMS

CU-Boulder offers two options for people interested in listening to daytime classes during the fall and spring semesters for no credit.

#### Senior Auditor Program

Colorado residents ages 55 and over can attend classes for a small fee on a space-available basis. Contact the Alumni Association at 303-492-8484 for more information or visit [www.colorado.edu/alumni/programs/senior-auditors](http://www.colorado.edu/alumni/programs/senior-auditors)

#### Community Auditor Program

Individuals ages 18-54 who are not CU-Boulder students can be formally added to class rosters as auditors. Call 303-492-5148 or email [ceregistration@colorado.edu](mailto:ceregistration@colorado.edu) for more information.

### ADDITIONAL INFORMATION

#### Student Privacy

CU-Boulder is committed to protecting your educational record by limiting disclosure of your personal (non-directory) information. Additionally, you may elect to have directory information withheld. Please call or visit our office to receive the required form.

#### Security Phrase

If you wish to access your personal information over the phone or in person without your photo ID, you must speak your security phrase to confirm your identity. If you have not yet set a security phrase in MyCUInfo, university staff will ask you to create a phrase before communicating with you. To set your security phrase, log in to MyCUInfo and expand the MyCUInfo Profile section in the lower right. Click on "Set Security Passphrase" within the Helpful Links. Phrases can contain up to 50 alphabetical characters (no numbers or symbols), should be easily remembered but difficult to guess, and cannot contain lewd, intimidating, abusive, or threatening language. Such language is in violation of the university's Student Conduct Code and will be referred to the Office of Student Conduct.

#### Disability Services

If you are a student with a disability, Disability Services can provide you with the tools, accommodations, and support services to engage fully in the academic environment. Visit [disabilityservices.colorado.edu](http://disabilityservices.colorado.edu) for more information.

#### Obtaining a Transcript

To obtain a record of courses taken, request a transcript through MyCUInfo at [MyCUInfo.colorado.edu](http://MyCUInfo.colorado.edu). You can also visit the CU registrar's website at [www.colorado.edu/registrar](http://www.colorado.edu/registrar) for other options.

#### Severe Weather

Campus closings are announced on local radio and television stations along with the CU website at [www.colorado.edu](http://www.colorado.edu). You will also find cancellations on Facebook ([facebook.com/CUContinuingEd](https://facebook.com/CUContinuingEd)) and Twitter (@CUContinuingEd).

### CONNECT WITH US

We're here to help you reach your academic goals.

[ce.colorado.edu/resources](http://ce.colorado.edu/resources)

Schedule an appointment with an advisor today!

#### Building Hours/Closures

Office Hours: Monday - Friday  
8 am to 5 pm

Summer Hours: Monday - Friday  
7:30 am to 4:30 pm, beginning May 9

CU-Boulder will be closed:

Friday, January 1  
Monday, January 18  
Friday, March 25



#### Discounts Available

For more information visit [ce.colorado.edu/resources/discounts](http://ce.colorado.edu/resources/discounts)

At the University of Colorado Boulder we are committed to building a campus community in which diversity is a fundamental value. People are different and the differences among us are what we call diversity—a natural and enriching hallmark of life. Diversity includes, but is not limited to, ethnicity, race, gender, age, class, sexual orientation, religion, disability, political viewpoints, veteran status, gender identity/expression, and health status. A climate of healthy diversity is one in which people value individual and group differences, respect the perspectives of others, and communicate openly.

Diversity is a key to inclusive excellence in education. A diverse learning environment better prepares all students for the world that awaits them. CU-Boulder is committed to enriching the lives of our students, faculty, and staff by providing a diverse campus where the exchange of ideas, knowledge, and perspectives is an active part of learning.

—from the Guidelines for Diversity Planning

The University of Colorado Boulder does not discriminate on the basis of race, color, national origin, sex, pregnancy, age, disability, creed, religion, sexual orientation, gender identity, gender expression, or veteran

status, political affiliation, or political philosophy in admission and access to, and treatment and employment in, its educational programs and activities. The university takes affirmative action to increase ethnic, cultural, and gender diversity, to employ qualified disabled individuals, and to provide equal opportunity to all students and employees.

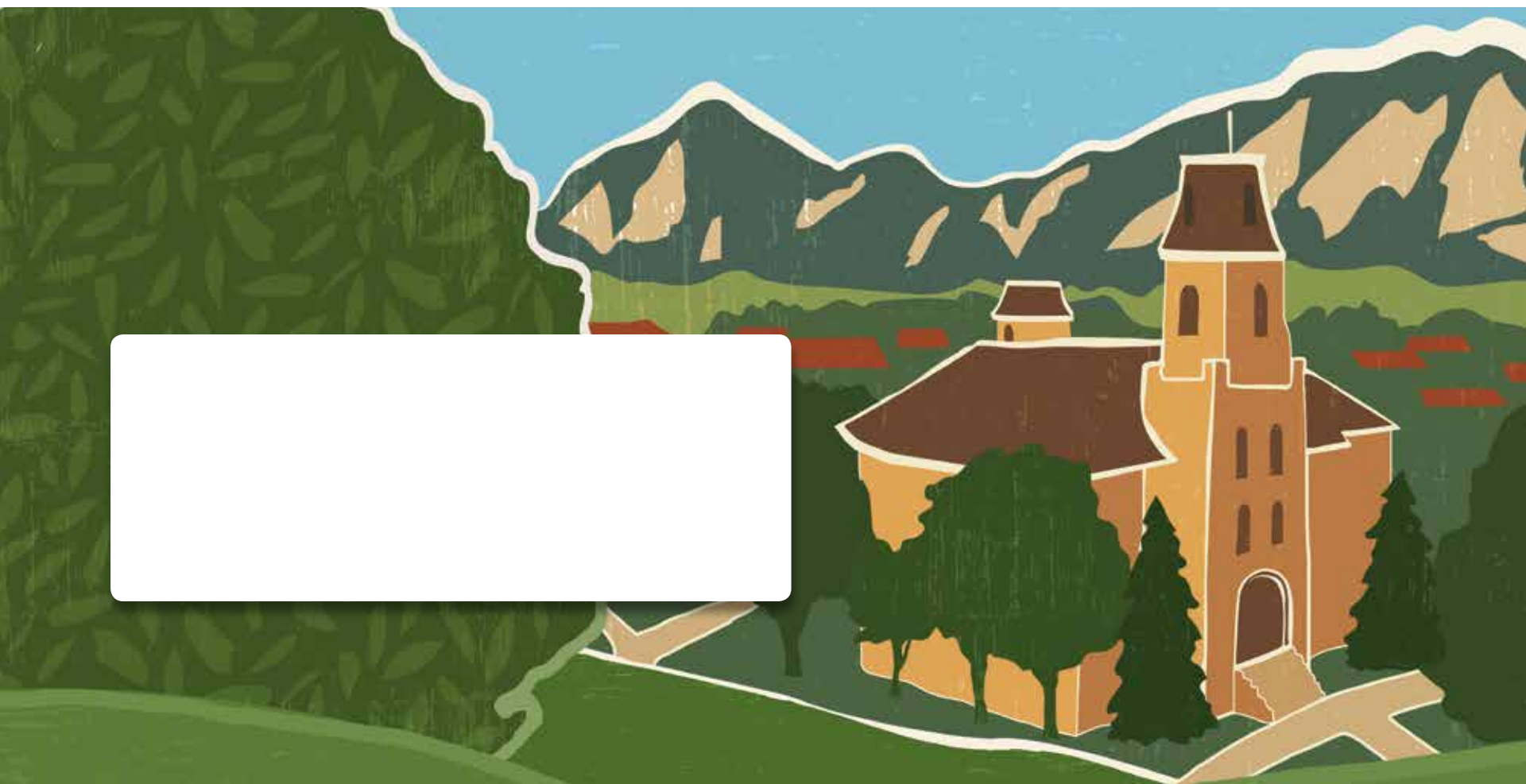
University of Colorado Boulder Catalog (USPS 651-060). 1505 University Avenue, 178 UCB, Boulder, CO 80309-0178. Volume 2015, No. 4, October/November. Published four times a year: January, March, June/July, and October/November. Periodicals postage paid at Boulder, Colorado, and additional mailing offices. POSTMASTER: Send address changes to the University of Colorado Boulder Catalog, Continuing Education, University of Colorado Boulder, 178 UCB, Boulder, CO 80309-0178.

Continuing Education is part of the Colorado Statewide Extended Campus, [higher.ed.colorado.gov/academics/ExtendedStudies](http://higher.ed.colorado.gov/academics/ExtendedStudies). This publication was printed and mailed using funds generated solely by Continuing Education programs. Continuing Education regrets any printing errors, but accepts no liability for them.

Design: Vermilion. Printing: Vision Graphics. Cover and Summer Session photos courtesy of the University Photographers.



12019170



## CU ON THE WEEKEND

Join us on campus for FREE Saturday presentations with some of CU-Boulder's most accomplished and dynamic faculty. See p. 21 for details.

**Saturday, Jan. 30, 1-3 p.m.**

Christians, Muslims and Jews in the Medieval Mediterranean, or Everything You Always Wanted to Know About the Holy War But Were Afraid to Ask

**Saturday, Feb. 13, 2-4 p.m.**

Cracking the Humor Code

**Saturday, Feb. 27, 1-3 p.m.**

The Animal Self: Insights from Sociology

**Saturday, March 5, 1-3 p.m.**

The Beginnings of Beer in the Ancient World

**Saturday, April 16, 1-3 p.m.**

CU in the Great War: Its Toll on Faculty, Students and the One Black Woman Trailblazer

**Saturday, April 30, 1-3 p.m.**

New Horizons Mission to Pluto